



CASE STUDY

INTEGRATED FIRE PROTECTION IN ENCLOSURES AND THE COOLING CONTROL SYSTEM

AMFE PROTECTS SWITCH CABINETS OF BODE GMBH IN SCHLESWIG HOLSTEIN

Bode GmbH from Schleswig Holstein is a globally active company in the development and production of sealing systems in building technology and civil engineering. This makes Bode GmbH an essential manufacturer for the safe sealing of systems for drinking water supply, wastewater disposal and gas supply.

The particular challenge in terms of fire protection in this case is the high ambient temperature caused by production facilities, manufacturing processes and the waste heat from the control systems. The control cabinets are located far away from each other. In addition, the switch cabinets for the air conditioning system are located on a gallery in the production plant. This makes it difficult to reach them in the event of a fire. This makes integrated fire protection more important. For this reason, 5 R-AMFEs with pressure gauges were installed in the control cabinets of the air conditioning system and the cooling control system for early fire detection and extinguishing to prevent interruptions to operations and ensure delivery capability.

”

„Thanks to the **AMFE's self-sufficient fire detection and extinguishing**, incipient fires are fought quickly and without leaving any residue.“

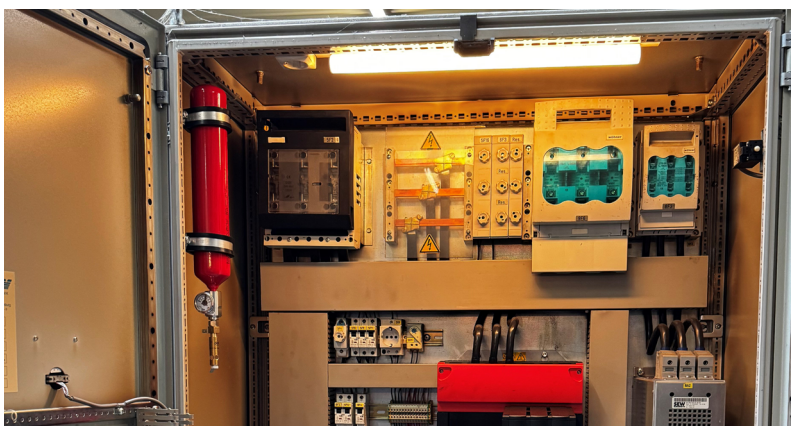


Christoph Laurer
Laurer ProTec GmbH



One of the AMFE-protected systems at Bode GmbH

Thanks to its different triggering temperatures, the AMFE can also be used reliably in warmer environments, such as those found at Bode GmbH. It offers effective protection against fires and the resulting damage. The AMFE is versatile and adaptable, making it an ideal solution for fire protection in different environments. Its use helps to minimize the risk of fires and ensure the safety and protection of property.



PROJECT SUMMARY:

Country: Germany
Realizer: Laurer ProTec GmbH
End customer: Bode GmbH
Segment: Industry
Solution: AMFE size 5 with pressure gauge and R-release head



For questions about possible applications or technical details about the AMFE mini fire extinguisher, please feel free to contact Nico Kühn (nico.kuehn@job-group.com).

AMFE with Manometer



JOB GmbH

Kurt-Fischer-Straße 30 • 22926 Ahrensburg • Germany
info@job-group.com | www.job-group.com